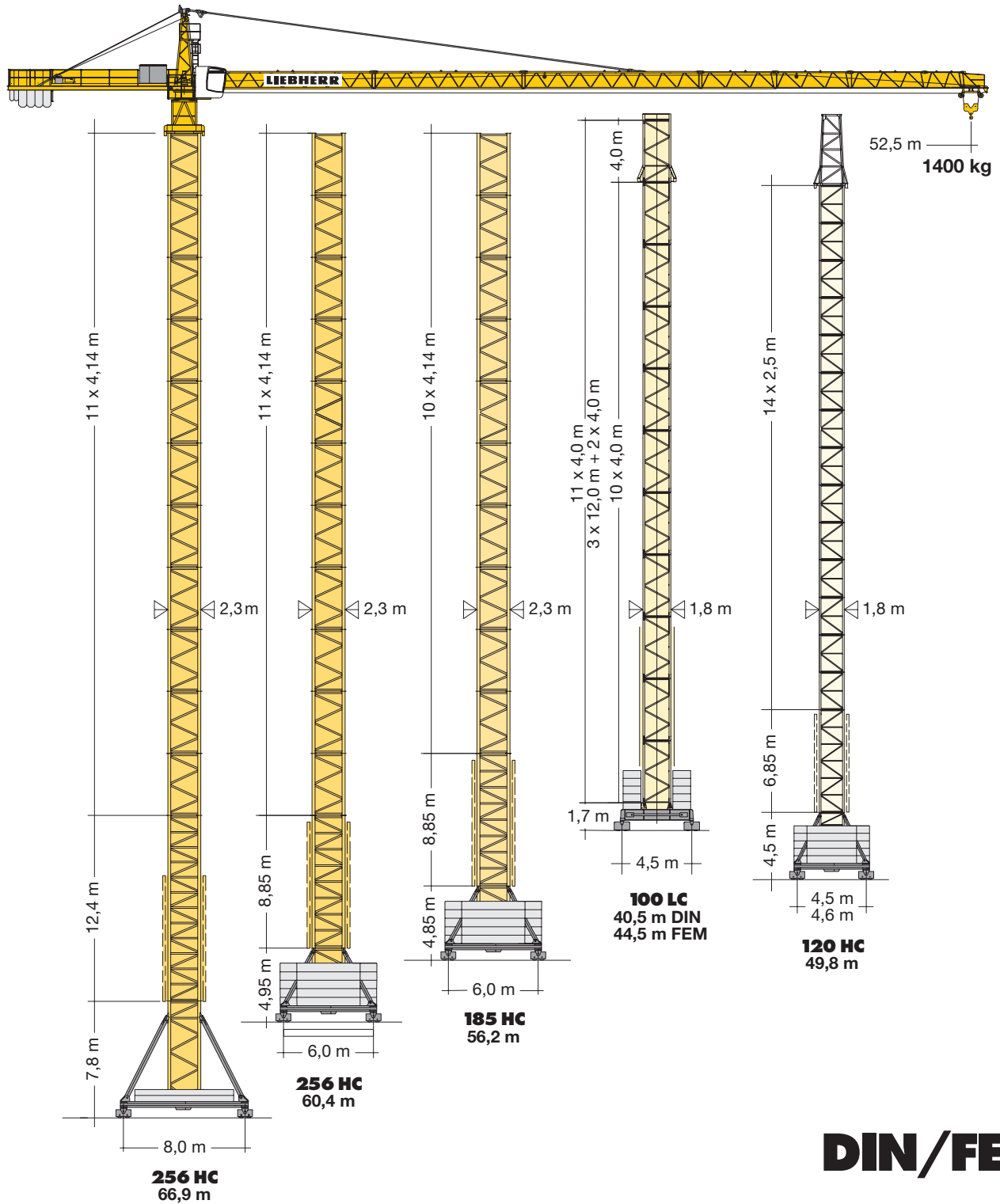


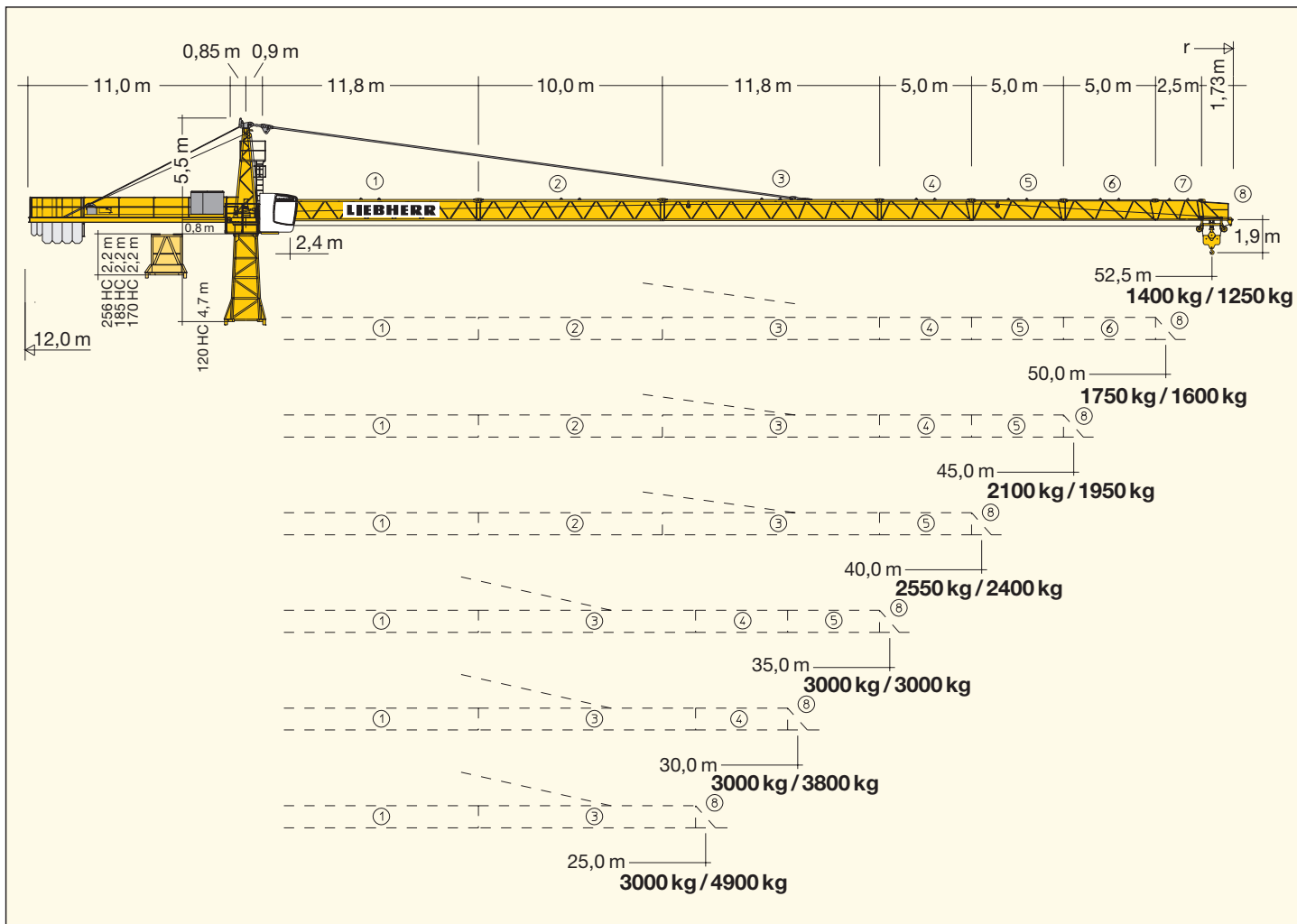
Turmdrehkran

100 EL 6

Tower Crane / Grue à tour / Gru a torre
Grúa torre / Guindaste de torre



LIEBHERR



Hubhöhe

Hoisting height / Hauteur sous crochet / Altezza di sollevamento / Altura bajo gancho / Altura de montagem

120 HC							
14	49,8*	49,3*	45,5*	2) 4,6 m	47,0*	46,8*	46,8*
13	47,3	46,8	43,0		44,5	44,3	44,3
12	44,8	44,3	40,5	1) 3,8 m	42,0*	41,8	41,8
11	42,3	41,8	38,0		39,5	39,3	39,3
10	39,8	39,3	35,5		37,0	36,8	36,8
9	37,3	36,8	33,0		34,5	34,3	34,3
8	34,8	34,3	30,5		32,0	31,8	31,8
7	32,3	31,8	28,0		29,5	29,3	29,3
6	29,8	29,3	25,5		27,0	26,8	26,8
5	27,3	26,8	23,0		24,5	24,3	24,3
4	24,8	24,3	20,5		22,0	21,8	21,8
3	22,3	21,8	18,0		19,5	19,3	19,3
2	19,8	19,3	15,5		17,0	16,8	16,8
1	17,3	16,8	13,0		14,5	14,3	14,3
0	14,8	14,3	10,5		12,0	11,8	11,8
	m	m	m	m	m	m	m

* Weitere Hubhöhen sowie Klettern im Gebäude auf Anfrage. / Further hoist heights and climbing in the building on request.
 Hauteurs sous crochet plus élevées et hissage dans le bâtiment sur demande. / Altre altezze di sollevamento come pure varianti di gru allungabili: su richiesta. / Para alturas bajo gancho superiores y trepado en el interior del edificio, consultar. / Outras alturas de elevação e subida no edifício: conforme ao pedido.

	U/min 0,75 sl./min tr./min	6,3 kW
	12,0 / 43,0 / 85,0 m/min	3,0 kW
	25,0 m/min	2 x 4,0 kW (120 HC) 2 x 7,5 kW (256 HC) 2 x 5,5 kW (185 HC, 170 HC)
	kVA	
		22,0 kW 22,0 kW FU 40,0 30,0

		Stufe / Step / Cran Marcia / Grado Velocidade					
		kg		m/min			
22,0 / 18,0 / 4,0 kW KL WIW 220 KY 006							
	62,0 m LS-Trommel	4 Lagen Layers Couches Strati Camadas Capas	1		3000	7,2	
			2		3000	30,0	
			3		1400	70,0	
1	2	3			6000	3,6	
					6000	15,0	
					3100	35,0	
22,0 kW FU WIW 230 KY 002							
	78,0 m LS-Trommel	5 Lagen Layers Couches Strati Camadas Capas	1		3000	3,6	
			2		3000	36,0	
			3		2300	44,0	
			4		1400	70,0	
1	2	3	4			6000	1,8
						6000	18,0
						4800	22,0
						3100	35,0

Hubhöhe

Hoisting height / Hauteur sous crochet / Altezza di sollevamento / Altura bajo gancho / Altura de montagem

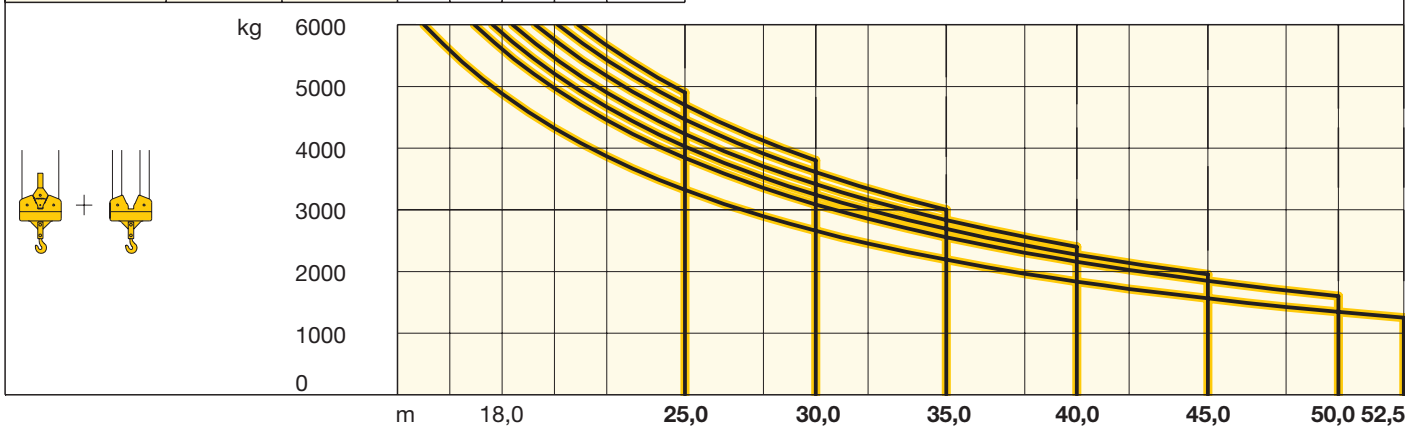
	100 LC		185 HC		256 HC	
12	-	-	-	-	-	63,5*
11	44,5* FEM	44,4* FEM	-	-	55,7*	60,4*
10	40,5* DIN	40,4* DIN	51,6*	56,2*	51,6	56,3
9	36,5	36,4	47,5	52,1	47,4	52,1
8	32,5	32,4	43,3	47,9	43,3	48,0
7	28,5	28,4	39,2	43,8	39,2	43,9
6	24,5	24,4	35,1	39,7	35,0	39,7
5	20,5	20,4	30,9	35,5	30,9	35,6
4	16,5	16,4	26,8	31,4	26,7	31,4
3	12,5	12,4	22,6	27,2	22,6	27,3
2	8,5	8,4	18,5	23,1	18,5	23,2
1	4,5	4,4	14,4	19,0	14,3	19,0
0	-	-	10,2	14,8	10,2	14,9
	m	m	m		m	m
				$r = 12,0 \text{ m}$	$r = 12,5 \text{ m}$	$r = 18,0 \text{ m}$

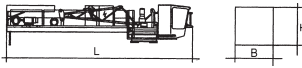

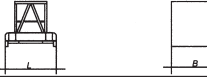
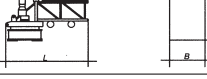
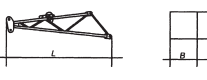
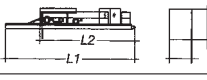
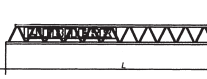

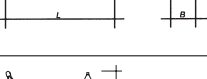
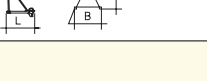
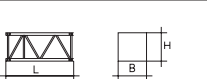
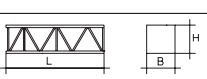
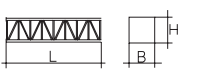


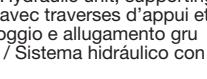

Ausladung und Tragfähigkeit



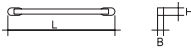

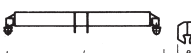
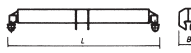
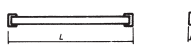
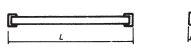
Radius and capacity / Portée et charge / Sbraccio e portata / Alcances y cargas / Alcance e capacidade de carga

m	r	m/kg	m/kg															
			16,0	18,0	20,0	22,0	25,0	28,0	30,0	32,0	35,0	38,0	40,0	42,0	45,0	48,0	50,0	52,5
52,5	(r = 54,0)	2,4-27,8 3000				3000	3000	2980	2750	2560	2300	2090	1970	1850	1700	1570	1490	1400
50,0	(r = 51,5)	2,4-31,6 3000				3000	3000	3000	3000	2960	2670	2430	2290	2160	1990	1840	1750	
45,0	(r = 46,5)	2,4-33,1 3000				3000	3000	3000	3000	3000	2820	2560	2410	2280	2100			
40,0	(r = 41,5)	2,4-34,7 3000				3000	3000	3000	3000	3000	2970	2710	2550					
35,0	(r = 36,5)	2,4-35,0 3000				3000	3000	3000	3000	3000	3000							
30,0	(r = 31,5)	2,4-30,0 3000				3000	3000	3000	3000									
25,0	(r = 26,5)	2,4-25,0 3000				3000	3000											

m	r	m/kg	m/kg																
			16,0	18,0	20,0	22,0	25,0	28,0	30,0	32,0	35,0	38,0	40,0	42,0	45,0	48,0	50,0	52,5	
52,5	(r = 54,0)	2,4-26,7 3000	2,4-15,0 6000	5580	4880	4320	3870	3320	2900	2660	2450	2190	1970	1840	1720	1560	1430	1340	1250
50,0	(r = 51,5)	2,4-30,3 3000	2,4-16,9 6000	6000	5690	4970	4450	3840	3360	3090	2860	2560	2300	2160	2020	1850	1690	1600	
45,0	(r = 46,5)	2,4-31,7 3000	2,4-17,6 6000	6000	5860	5200	4670	4030	3520	3240	3000	2690	2430	2270	2130	1950			
40,0	(r = 41,5)	2,4-33,3 3000	2,4-18,4 6000	6000	6000	5460	4900	4230	3710	3410	3160	2830	2560	2400					
35,0	(r = 36,5)	2,4-35,0 3000	2,4-19,3 6000	6000	6000	5760	5170	4460	3910	3610	3340	3000							
30,0	(r = 31,5)	2,4-30,0 3000	2,4-20,1 6000	6000	6000	6000	5430	4690	4120	3800									
25,0	(r = 26,5)	2,4-25,0 3000	2,4-20,9 6000	6000	6000	6000	5660	4900											



Kranoberteil		Upper part of crane / Partie supérieure de grue / Parte superiore della gru	Parte superior grúa / Parte superior do guindaste	L (m)	B (m)	H (m)	kg*	
Pos. Item Ref.	Anz. Qty. Voce Qta. Cant.	Komplettkrankopf / One-piece machine deck / Tête de grue		120 HC	14,60	2,44	2,62	8800
				256 HC	12,80			
2	1	Kabine mit Podest / Cabin with platform / Cabine avec plate-forme		4,20	1,35	2,20	950	
3	1	Übergangsstück / Adapter section / Tronçon de conversation / Spezzone collegamento / Tramo de adaptación / Peça ligadora		120 HC	5,00	2,20	2,30	2540
	170 HC			2,41	2,50	2,30	2750	
	185 HC			2,41	2,70	2,40	3170	
	256 HC			2,41	2,70	2,40	3170	
4	1	Drehbühne kpl. / Slewing platform cpl. / Ensemble mât cabine cpl. / Piattaforma girevole compl. / Conjunto plataforma de giro / Plataforma giratória compl.		2,05	1,75	2,45	3000	
5	1	Turmspitze + Teilabspannung / Tower head section + first suspension bars / Porte-flèche + premiers tirants / Cuspide + tiranti / Cabeza de torre + tirante de fijación / Cabeça de torre + parte de acessórios de ancoragem		5,30	1,40	1,70	1200	
6	1	Gegenausleger kpl. / Counter-jib cpl. / Contre-flèche cpl. / Controfreccia / Conjunto plataforma / Contra-lança compl.		L1 11,10	2,00	2,55	3450	
7	1	Ausleger-Anlenkstück + Teilabspannung / Jib heel section + first suspension bars / Pied de flèche + premiers tirants / 1 Elemento freccia + tiranti parziale / Tramo pie de pluma + Tirante de fijación / Base articulada da lança + parte de acessórios de ancoragem		11,97	1,15	1,50	① 1600	
8	1	Ausleger-Zwischenstück + Abspannung / Intermediate jib section + suspension bars / Elément interm. de flèche + tirants / Elementi intermedi braccio + tiranti / Tramo intermedio de pluma + tirantes / Peça suplementar de lança + acessórios de ancoragem		120 HC	10,20	1,02	1,50	② 1250
	170 HC			12,00	1,02	1,50	③ 1350	
	185 HC			5,20	1,02	1,25	④ 350	
	256 HC			5,20	1,02	1,25	⑤ 290	
	256 HC			5,20	1,02	1,25	⑥ 220	
9	1	Ausleger-Kopfstück / Jib head / Pointe de flèche / Punta freccia / Cabeça de lança / Tramo punta de pluma		2,70	1,02	1,25	⑦ 120	
				1,80	1,02	1,40	⑧ 125	
Turm		Tower / Mât / Torre	Torre / Torre					
10		Turmstück / Tower section / Element de mât / Elemento di torre / Torre / Torre		120 HC	2,50	1,80	1,80	1090
	120 HC			5,00	1,80	1,80	1830	
	170 HC			4,14	1,90	1,90	1850	
	185 HC			4,14	2,30	2,30	2240	
	256 HC			4,14	2,30	2,30	2300	
11		Turmstück lang / Long tower section / Elément de mât long / Elemento di torre, lungo / Tramo de torre largo / Peça de torre, comprida		120 HC	10,00	1,80	1,80	3425
12	1	Grundturmstück / Base tower section / Mât de base / Elemento di torre base / Tramo torre base / Peça de base de torre		120 HC	6,85	1,80	1,80	2610
	120 HC			10,00	1,80	1,80	3530	
	170 HC			9,60	1,90	1,90	4350	
	185 HC			8,85	2,30	2,30	4280	
	256 HC			8,85 (12,42)	2,30 (2,30)	2,30 (2,30)	4830 (7940)	
Klettereinrichtung		Climbing equipment / Equipement de télescage / Attrezzatura per allungamento della gru	Equipo de trepado / Acsórios p. subida no edificio					
13	1	Führungsstück kpl. / Guide section cpl. / Cage télescopique cpl. / Gabbia de sopraelevazione compl. / Peça de guia compl. / Torre de montaje completa		120 HC	6,45	2,10	2,42	2660
	120 HC			9,60	2,10	2,42	4410	
	170 HC			9,04	2,31	2,28	4750	
	185 HC			8,39	2,68	2,58 (3,04)	4070	
	256 HC			8,39	2,68	2,58 (3,04)	4070	
14	1	Hydraulikanlage, Stütz- und Klettertraverse / Hydraulic unit, supporting and climbing cross members / Système hydraulique avec traverses d'appui et de télescage / Sistema idraulico, traversa di appoggio e allungamento gru / Instalação hidráulica, travessa de apoio e subida / Sistema hidráulico con travessa de apoyo y trepado		120 HC	2,87	2,12	1,06	1000
	170 HC			2,30	1,10	1,00	1100	
	185 HC			2,30	1,10	1,00	1100	
	256 HC			2,30	1,10	1,00	1100	
	256 HC			2,30	1,10	1,00	1100	
Unterwagen		Undercarriage / Châssis / Carro della gru	Carro con mástil / Carro de guindaste					
15	2	Fahrschemel mit Antrieb / Rail bogie with drive / Bogie moteur / Telaio con gruppo propulsore / Quadro sem grupo de propulsão / Caja rodillo motriz		120 HC	1,38	0,88	0,87	900
	170 HC			1,46	0,84	0,87	920	
	185 HC			1,46	0,84	0,87	920	
	256 HC			1,63 (1,46)	0,92 (0,84)	0,95 (0,87)	1690 (920)	
	256 HC			1,63 (1,46)	0,92 (0,84)	0,95 (0,87)	1690 (920)	
16	2	Fahrschemel ohne Antrieb / Rail bogie without drive / Bogie fou / Telaio senza gruppo propulsore / Quadro com grupo de propulsão / Caja rodillo conducido		120 HC	1,17	0,60	0,87	860
	170 HC			1,15	0,60	0,87	880	
	185 HC			1,15	0,60	0,87	880	
	256 HC			1,37 (1,15)	0,62 (0,60)	0,95 (0,87)	1340 (880)	
	256 HC			1,37 (1,15)	0,62 (0,60)	0,95 (0,87)	1340 (880)	
17	1	Tragholm lang / Long support arm / Longeron long / Longherone lungo / Brazo largo soporte / Travessa comprida		120 HC	7,12	0,78	0,65	950
	170 HC			7,15	0,80	0,70	1070	
	185 HC			9,10	0,82	0,74	1350	
	256 HC			9,10 (11,95)	0,80 (0,82)	0,80 (0,80)	1650 (2200)	
	256 HC			9,10 (11,95)	0,80 (0,82)	0,80 (0,80)	1650 (2200)	

Pos. Item Rep. Voce Pos. Ref.	Anz. Qty. Qté. Qta. Cant. Cant.				L (m)	B (m)	H (m)	kg*
18	2	Tragholm kurz / Short support arm Longeron court / Longherone corto Brazo corto soporte / Travessa curta		120 HC	3,45	0,56	0,55	408
				170 HC	3,45	0,60	0,70	500
				185 HC	4,41	0,62	0,71	615
				256 HC	4,45 (5,85)	0,77 (0,65)	0,77 (0,77)	800 (1035)
19	2 + 2	Randträger / Border support Traverse / Supporti base Traviesa / Apoio de bordo		120 HC	4,02	0,35	0,12	95
				170 HC	4,08 – 4,30	0,16 – 0,33	0,11 – 0,14	80 – 200
				185 HC	5,48 – 5,46	0,11 – 0,17	0,16 – 0,38	118 – 454
				256 HC	5,46 – 5,40 (7,52 – 7,46)	0,11 – 0,18 (0,10 – 0,17)	0,16 – 0,38 (0,10 – 0,38)	175 – 525 (366 – 912)
20	4	Stützhalm / Support strut Hauban de châssis / Correnti di appoggio Tirante vertical / Travessa de apoio		120 HC	3,78	0,15	0,22	200
				170 HC	3,53	0,25	0,17	240
				185 HC	4,23	0,17	0,25	275
				256 HC	4,14 (6,55)	0,18 (0,22)	0,25 (0,25)	320 (600)
21	1	Untewagen-Turmstück / Undercarriage tower section / Mât de châssis / Elemento di torre del carro / Tramo de carro Peça de torre do chassis		120 HC	3,50	2,06	2,06	1320
				170 HC	3,30	2,15	2,15	2000
				185 HC	3,73	2,52	2,52	1950
				256 HC	3,73 (6,70)	2,62 (2,53)	2,62 (2,53)	2250 (3800)
22	2	Fundamentkreuz mit Spindeln, Tragholm lang Cruciform base with outrigger jacks, long support arm / Châssis en croix avec vérins, longeron long Base incrociata con aste, longherone lungo Tramo largo base cruciforme, con husillos Base cruciforme com árvores, travessa comprida		91 EC	4,6 m 7,00	0,90	0,90	3000
					3,8 m 5,90			
23	2	Fundamentkreuz fahrbar, Tragholm lang Cruciform rail going, long support arm / Châssis en croix roulant, longeron long / Base incrociata mobile, longherone lungo / Brazo soporte largo de base cruciforme para traslación sobre via Base cruciforme móvel, travessa comprida		91 EC	4,6 m 7,00	0,90	0,90	2800
					3,8 m 5,90			
24	4	Fundamentkreuz fahrbar, Randträger Cruciform rail going, border support / Châssis en croix roulant, traverse / Base incrociata mobile, traviesa / Traviesa de base cruciforme móvel, apoio de bordo (Fahrwerke wie Pos. 15 und 16) / (Travel gears as under item 15 and 16) / (Mécanismes de translation comme pos. 15 et 16) / (Gruppi propulsori marcia come da voce 15 e 16) / (Mecanismos de traslación como Pos. 15 y 16) / (Grupos de propulsão de marcha: igual a ref. 15 et 16)		91 EC	4,6 m 3,90	0,60	0,20	185
					3,8 m 3,00			
25	1	Kiste mit Kleinteilen / Crate with small parts Caisse contenant des accessoires / Cassa con accessori Caja con accesorios / Caixa de acessórios		120 HC	2,00	1,00	1,00	2000
				170 HC				
				185 HC				
				256 HC				

() **Angaben in Klammern gelten für 8 m-Untewagen.** / The data in brackets are valid for an undercarriage of 8 m. / Les données techniques indiquées entre parenthèses sont valables pour un châssis de 8 m. / Caratteristiche in (..) valgono per carro di 8 m. / Los datos entre paréntesis son válidos para carro de 8 m. / Características em (..) válidas pelo chassis de 8 m.

* **Einzelgewichte.** / Single weights. / Poids individuels. / Pesí di componentí. / Pesos de peças componentes. / Pesos unitarios.

Konstruktionsänderungen vorbehalten!

Subject to alterations! / Sous réserves de modifications!
Si fa riserva di modifiché! / Salvo modifíção da construação!
¡Sujeto a modificaciones!

Sämtliche Angaben erfolgen ohne Gewähr. / This information is supplied without liability.

Ces renseignements sont sans garantie. / Le indicazioni contenute si intendono salvo errori ed omissioni.
Declinamos toda responsabilidad derivada de la información proporcionada. / Declinamos qualquer
responsabilidade quanto à informação fornecida.