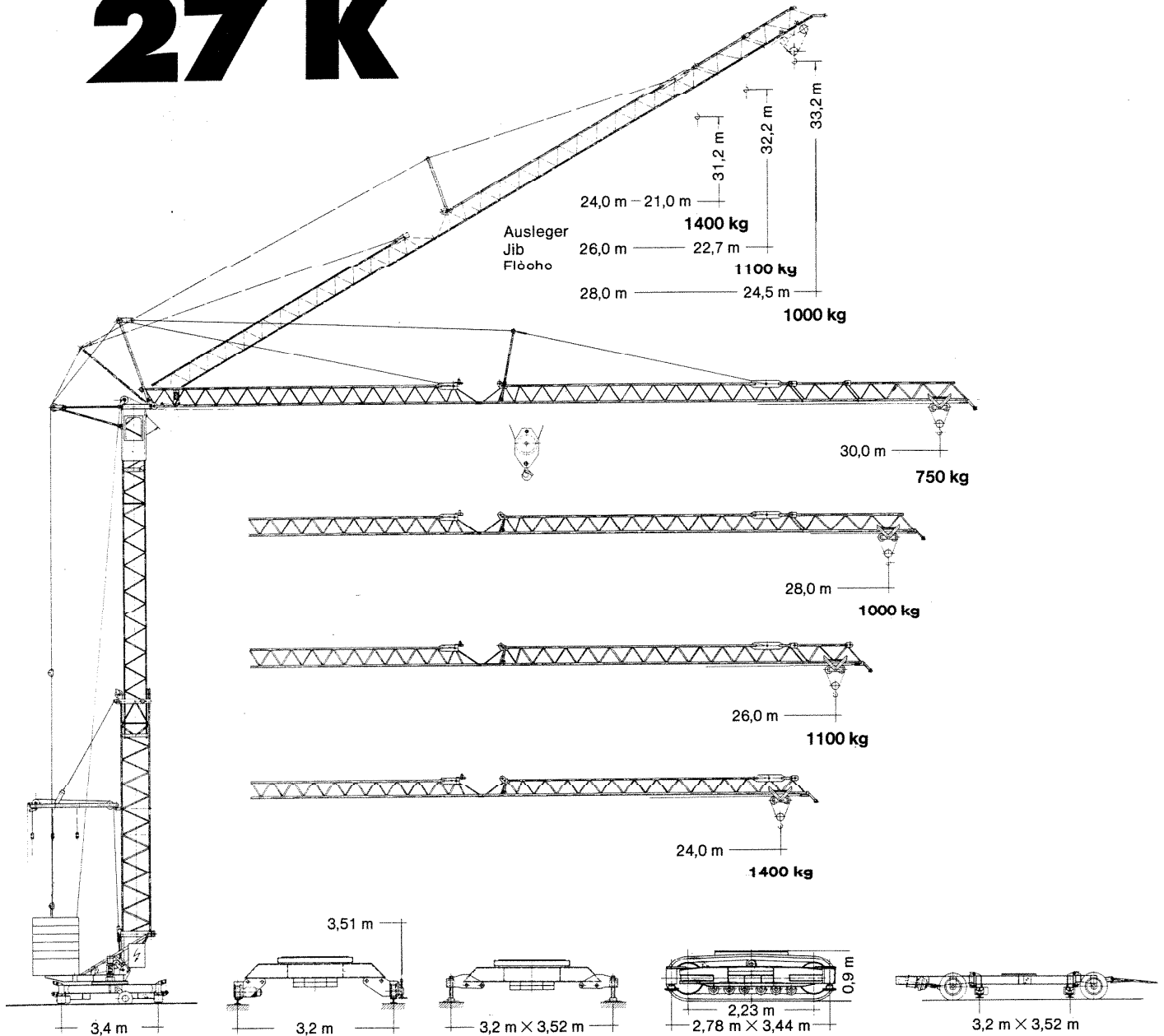


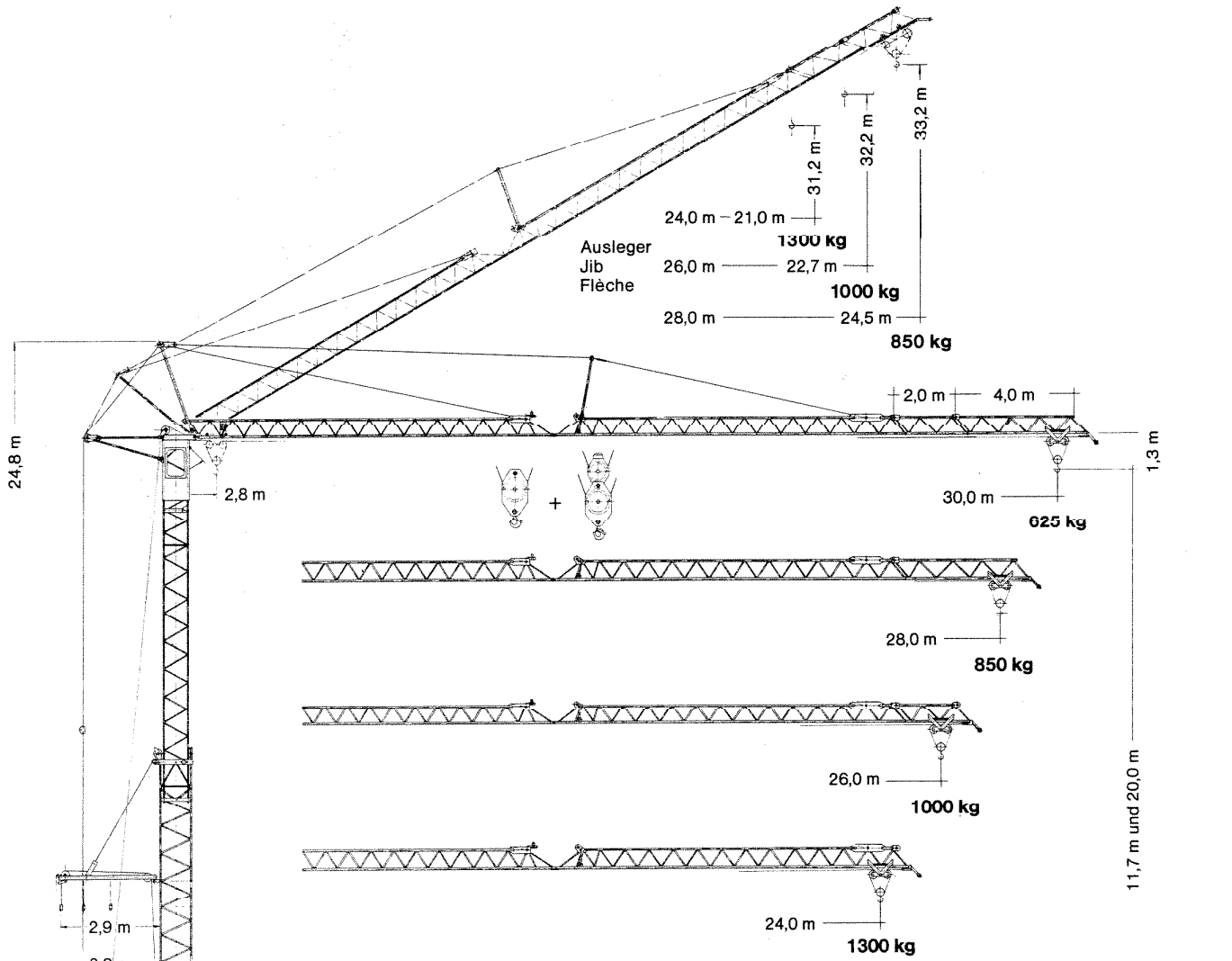
**Tower Crane
Grue à tour**

Turmdrehkran 27 K



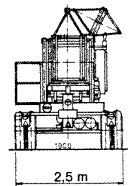
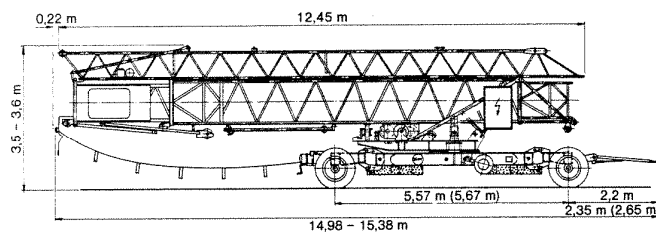
LIEBHERR





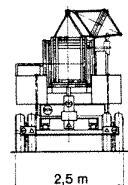
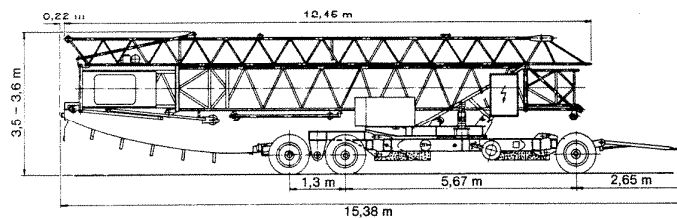
Rüstzustand I
Kind of transport I
Mode de transport I

Transportgewicht 15000 kg
Transport weight 32000 lbs
Poids de transport



Rüstzustand II
Kind of transport II
Mode de transport II

Transportgewicht 19000 kg
Transport weight 41600 lbs
Poids de transport




Technische Daten


Gewicht Weight Poids

| | |
|-------------------------------------------------------------------------------------------------------------|-----------------------|
| Max. Ecklast in Betrieb Max. corner pressure in operation Réaction max. par angle en service | 17251 kg 38038 lbs |
| Max. Ecklast außer Betrieb Max. corner pressure out of operation Réaction max. par angle hors service | 10272 kg 22650 lbs |
| Zentralballast ca. Central ballast approx. Lest-fixe de chassis env. | 1900 kg 4190 lbs |

| | |
|-----------------------------------------------------------------|-----------------------|
| Gegengewicht ca. Counter weight approx. Contrepoids env. | 14000 kg 30870 lbs |
| Konstruktionsgewicht Dead weight Poids de la construction | 9850 kg 21720 lbs |

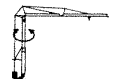
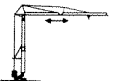
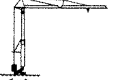
Ausladung und Traglast Radius and capacity Portée et charge



| | | | | | | | | | | |
|-----------------------------------------------------------------------------------|-----|------|------|------|------|-------------|-------------|-------------|-------------|--|
|  | | | | | | | | | | |
| Max. Traglast Max. capacity Charge max. | m | 16,0 | 18,0 | 20,0 | 22,0 | 24,0 | 26,0 | 28,0 | 30,0 | |
| | ft | 52.5 | 59.0 | 65.6 | 72.2 | 78.7 | 85.3 | 91.8 | 98.4 | |
| 2,8 - 13,1 m 9.2 - 43.0 ft 2000 kg / 4400 lbs | kg | 1600 | 1390 | 1220 | 1090 | 980 | 890 | 815 | 750 | |
| | lbs | 3520 | 3060 | 2680 | 2400 | 2160 | 1960 | 1790 | 1650 | |
| 2,8 - 15,5 m 9.2 - 50.9 ft 2000 kg / 4400 lbs | kg | 1925 | 1680 | 1485 | 1320 | 1200 | 1100 | 1000 | | |
| | lbs | 4235 | 3700 | 3270 | 2900 | 2640 | 2420 | 2200 | | |
| 2,8 - 15,6 m 9.2 - 51.2 ft 2000 kg / 4400 lbs | kg | 1950 | 1700 | 1500 | 1330 | 1210 | 1100 | | | |
| | lbs | 4290 | 3740 | 3300 | 2930 | 2660 | 2420 | | | |
| 2,8 - 17,6 m 9.2 - 57.7 ft 2000 kg / 4400 lbs | kg | | 1955 | 1730 | 1550 | 1400 | | | | |
| | lbs | | 4300 | 3810 | 3410 | 3080 | | | | |

| | | | | | | | | | | |
|-----------------------------------------------------------------------------------|-----|------|------|------|------|-------------|-------------|-------------|-------------|--|
|  | | | | | | | | | | |
| Max. Traglast Max. capacity Charge max. | m | 16,0 | 18,0 | 20,0 | 22,0 | 24,0 | 26,0 | 28,0 | 30,0 | |
| | ft | 52.5 | 59.0 | 65.6 | 72.2 | 78.7 | 85.3 | 91.8 | 98.4 | |
| 2,8 - 15,5 m 9.2 - 50.8 ft 1500 kg / 3300 lbs | kg | 1450 | 1245 | 1090 | 960 | 855 | 765 | 690 | 625 | |
| | lbs | 3190 | 2740 | 2400 | 2110 | 1880 | 1680 | 1520 | 1375 | |
| 2,8 - 10,4 m 9.2 - 34.1 ft 3000 kg / 6600 lbs | kg | 1750 | 1500 | 1320 | 1160 | 1045 | 945 | 850 | | |
| | lbs | 3850 | 3300 | 2900 | 2550 | 2300 | 2080 | 1870 | | |
| 2,8 - 10,8 m 9.2 - 35.4 ft 3000 kg / 6600 lbs | kg | 1850 | 1600 | 1400 | 1240 | 1110 | 1000 | | | |
| | lbs | 4070 | 3520 | 3080 | 2730 | 2440 | 2200 | | | |
| 2,8 - 12,2 m 9.2 - 40.0 ft 3000 kg / 6600 lbs | kg | 2075 | 1860 | 1630 | 1450 | 1300 | | | | |
| | lbs | 4565 | 4090 | 3590 | 3190 | 2860 | | | | |

(h = 1500 kg/3300 lbs)

Geschwindigkeiten Speeds Vitesses

| | | |
|-------------------------------------------------------------------------------------|---------------------------------------|-----------------------|
|  | U/min 0-1 sl./min tr./mn | 2,2 kW/3.0 HP |
|  | 15,0/ 30,0 m/min 50,0/100,0 ft/min | 1,0 kW/1.4 HP |
|  | 25,0 m/min 82,0 ft/min | 2 x 1,5 kW/2 x 2.0 HP |

| Hubwerk Hoist gear Mécanisme de levage | Gang Gear Boite | kg | m/min | lbs | ft/min |
|-------------------------------------------------------------------------------------|-----------------------|------|-------|------|--------|
|  | 1 | 2000 | 6,0 | 4400 | 20,0 |
| | 2 | 2000 | 27,0 | 4400 | 88,6 |
| | 3 | 1000 | 55,0 | 2200 | 180,0 |
|  | 1 | 1500 | 6,0 | 3300 | 20,0 |
| | | 3000 | 3,0 | 6600 | 10,0 |
| | 2 | 1500 | 27,0 | 3300 | 88,6 |
| | | 3000 | 13,5 | 6600 | 44,3 |
| | 3 | 1000 | 55,0 | 2200 | 180,0 |
| | | 2000 | 27,0 | 4400 | 88,6 |

Kabelquerschnitt bei 380 V
Cross section of cable 380 V
Section de câble à 380 V

bis 20 m up to 65 ft jusqu'à 20 m

4 x 6 mm²
4 x 0.0093 sq. inch

bis 28 m up to 92 ft jusqu'à 28 m

4 x 10 mm²
4 x 0.015 sq inch

Betriebsspannung 380 V
Operating voltage 380 V
Tension de service

Frequenz 50 Hz
Frequency 50 Hz
Fréquence

Gesamtmotorenleistung 15,9 kW
Total motor output 21.6 HP
Puissance totale des moteurs

Technical data Caractéristiques techniques

