

Technical Data Sheet Fast-Assembly Crane Model 50 K

Plan coté pour grue à montage rapide modèle 50 K


Technical data

Caractéristiques

Hoist speed (2-part reeving)						Hoist gear		24.1/24.1/5.0 HP					
Vitesses de levage (à 2 brins)						Mécanisme de levage		18,0/18,0/3,7 kW					
Speed III up to	3310 lbs	100.4 ft/min	Slowing speed	0-1.0	ft./min	Slowing gear	4.7	HP					
Vitesse III jusqu'à	1500 kg	55,0 m/min	Vitesse d'orientation	0-1,0	U/min	Mécanisme d'orientation	3,5	kW					
Speed II up to	6615 lbs	90.2 ft/min	Travelling speed	98.4/32.8	ft/min	Travel gear	2×2.7/0.87	HP					
Vitesse II jusqu'à	3000 kg	27,5 m/min	Vitesse de translation	30,0/10,0	m/min	Mécanisme de translation	2×2,0/0,05	kW					
Speed I up to	6615 lbs	16.4 ft/min	Trolley travelling speed	164.0/82.0/19.7	ft/min	Trolley gear	2.8/1.9/0.5	HP					
Vitesse I jusqu'à	3000 kg	5,0 m/min	Vitesse du chariot	50,0/25,0/ 6,0	m/min	Mécanisme du chariot	2,1/1,4/0,4	kW					
Hoist speed (4-part reeving)						Hoist gear		24.1/24.1/5.0 HP					
Vitesses de levage (à 4 brins)						Mécanisme de levage		18,0/18,0/3,7 kW					
Speed III up to	6615 lbs	90.2 ft/min	Total motor output				37.0	HP					
Vitesse III jusqu'à	3000 kg	27,5 m/min	Puissance totale des moteurs				27,6	kW					
Speed II up to	13230 lbs	45.1 ft/min	Jib pivoting point				109.6	ft					
Vitesse II jusqu'à	6000 kg	13,8 m/min	Point de fixation de la flèche				33,4	m					
Speed I up to	13230 lbs	8.2 ft/min	Hoisting height				104.7	ft					
Vitesse I jusqu'à	6000 kg	2,5 m/min	Hauteur de levage				31,9	m					
Wheel gauge	15.4 ft		Track gauge	15.1 ft		Dead weight	57110	ft					
Emplacement	4,7 m		Ecartement de voie	3,2 m		Poids de la construction	25900	kg					
Max. wheel load (in operation)			73890 lbs			Max. wheel load (out of operation)	54310	lbs					
Pression max. par galet (en service)			33510 kg			Pression max. par galet (hors service)	24630	kg					
Crane with max. radius	ft	121.4		96.4		02.0	65.8						
Grue avec portée max.	m	37,0		30,0		25,0	20,0						
Radius	ft	121.4	40.4	12.8	98.4	44.7	12.8	82.0	48.3	12.8	65.6	51.2	12.8
Portée	m	37,0	12,3	3,9	30,0	13,6	3,9	25,0	14,7	3,9	20,0	15,6	3,9
Capacity	lbs	3152	13230	13230	4850	13230	13230	6790	13230	13230	9700	13230	13230
Capacité	kg	1430	6000	6000	2200	6000	6000	3080	6000	6000	4400	6000	6000
Hoist speed	ft/min	180.4	45.1	45.1	90.2	45.1	45.1	45.1	45.1	45.1	45.1	45.1	45.1
Vitesse de levage	m/min	55,0	13,8	13,8	27,5	13,8	13,8	13,8	13,8	13,8	13,8	13,8	13,8
Counter weight (concr.) approx.	lbs		48820		48820			48820			48820		48820
Contre-poids (béton) env.	kg		22140		22140			22140			22140		22140

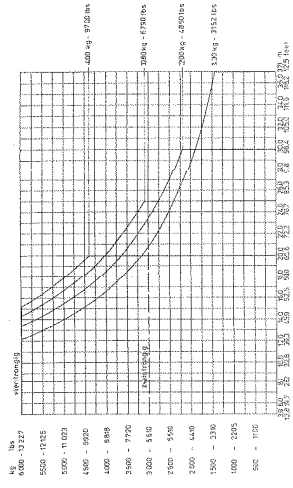
Projektblatt Nr. 120 P - 1730/o - 10.76

LIEBHERR

How to design cranes 

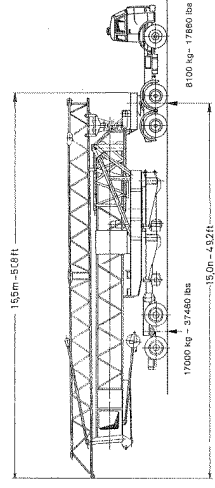
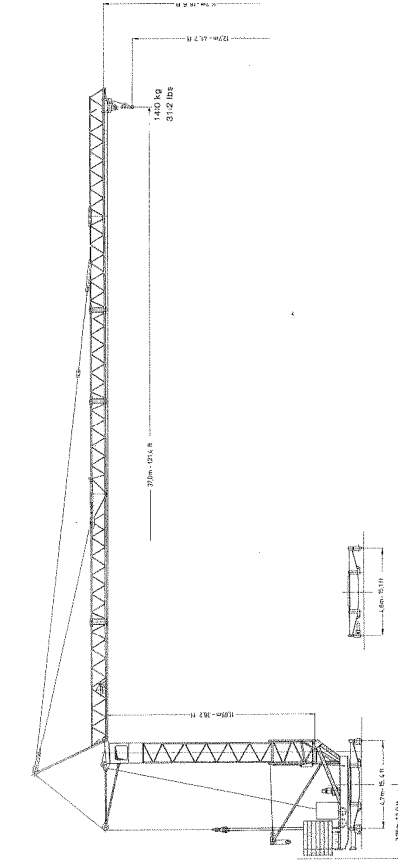
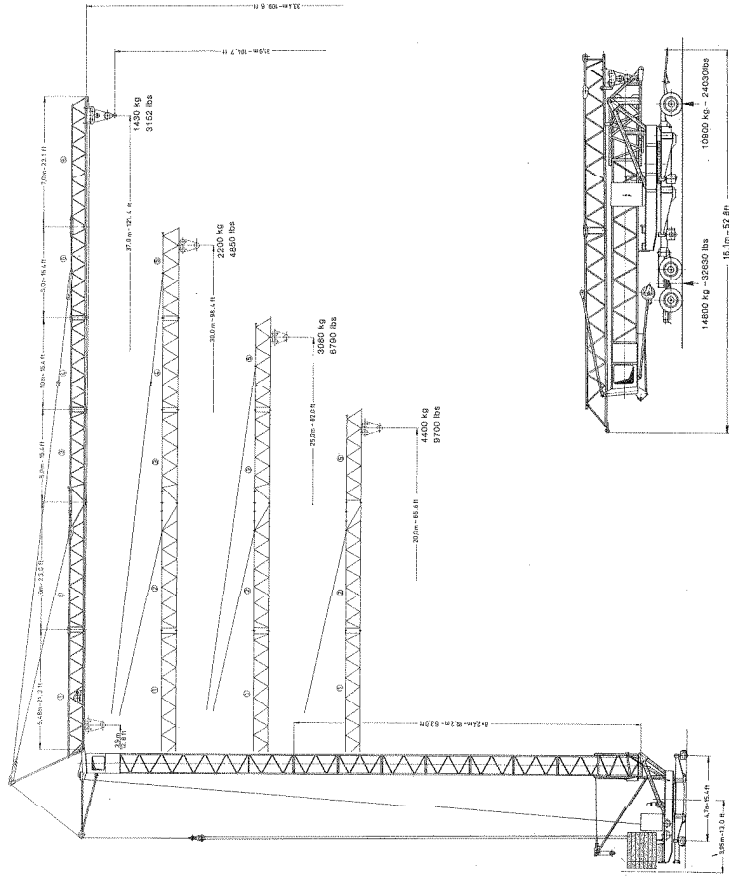
Load Capacity Diagram 50 K

Diagramme de charge 50 K



Hoisting height Hauteur de levage	ft	m
8	31.9	104.7
7	29.5	96.8
6	27.1	88.9
5	24.7	81.0
4	22.3	73.2
3	19.9	65.3
2	17.5	57.4
1	15.1	49.5


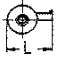
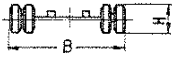

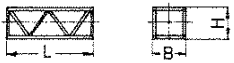
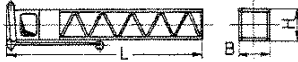





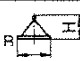




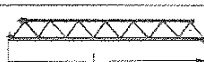
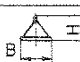

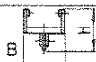
Number of tower sections
Nombre d'éléments de mât



minimum curve radius 21.3 ft
rayon inf. mini pour voie courbe 6.5 m

Package List Crane Type 50 K

Liste de colisage grue pour emploi rapide 50 K

Item	Nb.	Designation		Length ft	Width ft	Height ft	Unit weight lbs	Total weight lbs
Pos.	Nbre	Désignation		Longueur m	Largeur m	Hauteur m	Poids unitaire kg	Poids total kg
1	1	Undercarriage compl. with travelling gears		17.06	8.20	2.62		12345
1	1	Chariot complet avec mécanisme de translation		5,2	2,5	0,8		5600
2	2	Front-axle		10.82	8.20	3.28		2535
2	2	Essieux avant		10,17	8,20	3,28		5730
2	2	Rear-axle		3.3	2.5	1.0		1150
2	2	Essieux arrière		3,1	2,5	1,0		2600
3	1	Revolving platform compl. with guide section and hydraulic jack		23.94	8.20	7.22		21230
3	1	Partie giratoire avec élément de télescopage et presses hydrauliques		7,3	2,5	2,2		9630
4	8	Tower section each 7.87 ft		7.87	3.94	3.61	1015	8110
4	8	Élément de mât 2,4 m		2,4	1,2	1,1	460	3680
5	1	Tower section with operator's cab and A-frame		39.36	4.26	5.09		5200
5	1	Tête de tour avec cabine et porte-poulies		12,0	1,3	1,8		2360
6	1	Jib food section		23.29	3.94	3.61		2755
6	1	Élément de fixation de la flèche		7.1	1.2	1.1		1250
7	1	Jib intermediate section		23.29	3.94	3.28		1100
7	1	Élément intercalaire de la flèche		7.1	1.2	1.0		500
8	1	Jib intermediate section I		16.73	3.94	3.28		500
8	1	Élément interméd. de la flèche I		5.1	1.2	1.0		230
9	1	Jib intermediate section II		16.73	3.94	2.95		485
9	1	Élément interméd. de la flèche II		5.1	1.2	0.9		220
10	1	Jib head piece		17.38	3.94	3.28		860
10	1	Tête de flèche		5.3	1.2	1.0		390
11	1	Jib extension		23.29	3.94	2.95		575
11	1	Railonge de flèche		7.1	1.2	0.9		260
12	1	Trolley		3.94	4.26	1.97		440
12	1	Chariot distributeur		1.2	1.3	0.6		200
13	1	Ropes with small parts		3.28	2.62	2.62		3485
13	1	Caisse avec câbles et pièces		1,0	0,8	0,8		1580
14	1	Crane on road transport compl. (trailer)		52.81	8.53	13.12		56660
14	1	Grue compl. pour transport sur route (remorque)		16,1	2,6	4,0		25700
15	1	Crane on road transport compl. (semi-trailer)		50.84	8.53	13.12		55335
15	1	Grue compl. pour transport sur route (semi-remorque)		15,5	2,6	4,0		25100

Sous réserve de modifications de construction!

Subject to modification!